



**insofast**<sup>®</sup>

secure in the knowledge

CI / SfB

Xt6

June 2011

FIXINGS FOR  
LIGHTWEIGHT BLOCKS



**ISF AIRTWIST**



## Quick guide

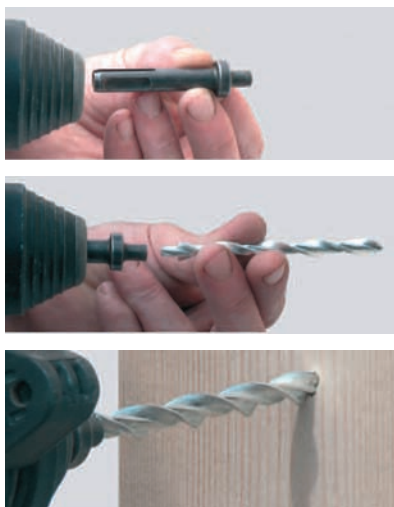
- ANCHORS WOOD TO ALL BRANDS OF AIRCRETE
- RAPID POWER DRIVEN INSTALLATION
- SELF-TAPPING MASONRY FASTENERS
- HIGH AXIAL STRENGTH & SHEAR CAPACITY
- PATENTED HELIX CONSISTENCY
- PRECISE HELICAL INTERLOCK ANCHORAGE
- LOW COST SDS TOOLING



## Description

AirTwist™ is a new high speed frame fixing that nails timber battens, frames and wall plates to Aircrete without any need to pre-drill or to plug and screw.

Using a neat SDS setting tool these lost-head nails are hammered directly through the timber and into all types of Aircrete blocks. Work-hardened helical blades force the tie to cut a self-tapping helical thread as installation proceeds.



## Benefits

The slim helical form of the AirTwist lost-head nail alleviates timber-splitting and offers a mechanical interlock anchorage that exerts no expansive crushing stress into the Aircrete..

The performance advantage offered by the Thin Joint Wall Tie stems its engineered twisting accuracy (Patent EP1307303), which forms an unrivalled tightly mating interlock within the Aircrete to provide superior performance.



## Product Specification

<b>Product</b>	AirTwist™ Aircrete fixings
<b>Material</b>	BZP Carbon Steel
<b>Nominal Diameter</b>	≤ 8.0mm
<b>Nominal C.S.A</b>	⇒ >13.0mm
<b>Pitch Deviation on Nail</b>	< 0.5%*
<b>Tensile Strength</b>	> 650N/mm <sup>2</sup>

British Patent No. GB 2439633  
Worldwide Patents Pending

### AIRTWIST™ FASTNERS FOR AIRCRETE

TIMBER DEPTH	AIRTWIST LENGTH
25mm	75mm
26-37mm	100mm
38-50mm	125mm

**Insofast Limited**  
Windmill Hill Business Park, Whitehill Way,  
Swindon, SN5 6QR  
[www.insofast.co.uk](http://www.insofast.co.uk)

Precision engineered Insofast anchors are manufactured under licence of European Patent Numbers EP1307303 & EP1710372

distributor sales  
**0845 308 7007**

email  
**sales@insofast.co.uk**